



REMI

Remi Edelstahl tubulars Ltd.

Investor presentation **2025-26**

UHP Tubing

High Purity Systems

UHP Tubing

High Purity Systems

Nuclear Grade Systems

Nucle

COMPANY OVERVIEW



Remi Edelstahl Tubulars Ltd. stands as a pioneer in India's stainless steel pipe industry, delivering high-performance solutions since 1970. With decades of expertise, the company supports mission critical sectors such as energy, defence, aerospace and industrial manufacturing.

5 decades
of experience



100+ customers
from oil & gas, thermal & nuclear power, defence, aerospace sectors



300+ employees
from various fields such as mechanical engineering, metallurgy & operations



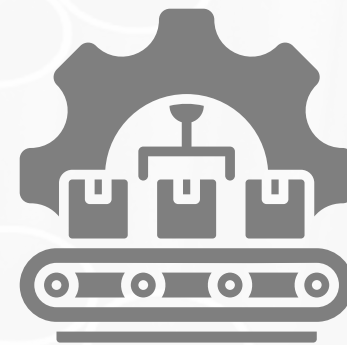
12,000 mt
Annual installed capacity



Revenue from Operations
₹ 14291.88 Lakhs



Profit after Tax
₹ 274.25 Lakhs



Manufacturing & Capacity

- Centralized manufacturing facility located in Tarapur, Maharashtra.
- Total area: 51,000 sq. meters.
- State of the art infrastructure.
- Product range includes seamless and welded pipes.
- Supports diverse industrial applications.



Quality & Approvals

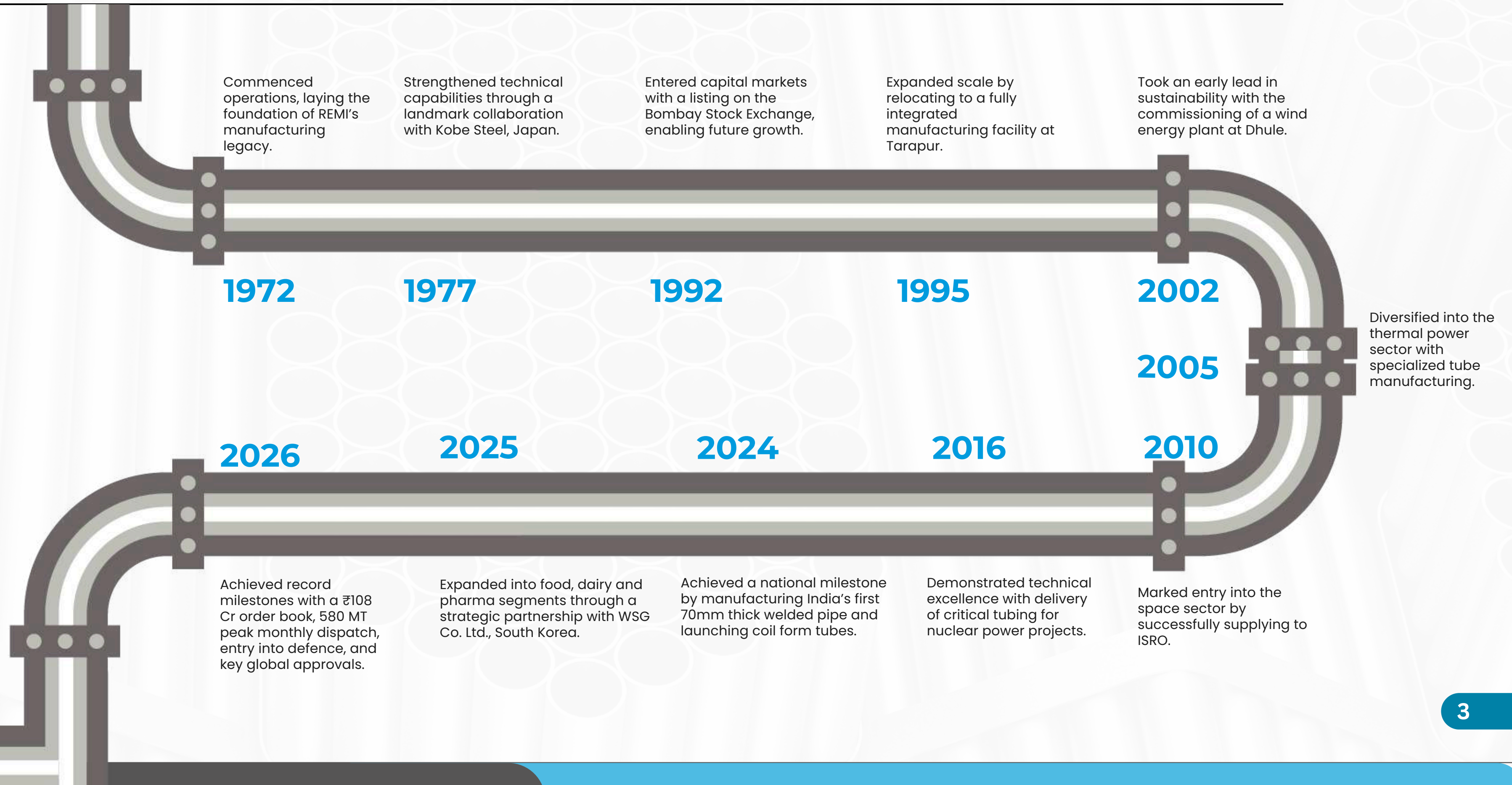
- REMI specializes in high-quality stainless steel pipes and tubes.
- Emphasis on durability and reliability.
- Advanced manufacturing processes and strict quality control systems.
- Holds key certifications: ISO 9001, 14001, 45001.
- Approved by major consultants and EPC contractors.



Sustainability & Innovation

- RETL showcases strong environmental commitment through renewable energy use.
- Windmills installed at Dhule (Maharashtra) supply over 50% of total power needs.
- Overall power consumption reduced by 5% over the last 2 years.
- 100% of the water used is treated for domestic re-use, making our facility a zero liquid discharge (ZLD) plant.
- 5,000 sq. m of storage space converted into green area, expanding total garden area to 10,000 sq. m.

A Legacy Forged in Steel



Steel Solutions for Every Challenge



Three core product families. Hundreds of configurations. One common denominator – built to perform in conditions where most materials fail.



SS Welded Pipes

Strength for large scale applications

- Large diameter, high wall thickness solutions
- Widely used in Oil & Gas, Water Treatment and Fertilizer plants
- Manufactured in compliance with ,
1.ASTM A-358, A-778, A-928 (OD 8" to 80" | THK: 3 to 80 mm
2.ASTM A-312 (OD: ½" to 32" NB | THK: 1.6 to 10 mm)



SS Welded Tubes

Versatility across critical industries

- U bends and custom shaped tube solutions
- Applications across Thermal & Nuclear Power, HVAC, Chemicals, Food, Dairy & Pharmaceuticals



SS Cold Drawn Seamless Tubes

Precision for high performance needs

- U bend and precision shaped configurations
- Used in Thermal & Nuclear Power, Aerospace & Defence, Oil & Gas
- Custom specifications available for critical applications
- Conforms to ASTM A-213, A-268, A-269, A-789 (OD: 6 to 76mm | THK: 0.8 to 10mm)

Innovation Edge

India's first mechanically & electropolished welded + seamless SS tubes for UHP applications

Advanced Super Duplex welded pipes for superior corrosion resistance

Capability to deliver complex shaped tubes, now in commercial production

Credentials That Build Confidence



In industries where specifications are non-negotiable, certifications are not decorations, they are entry tickets. REMI holds all the right ones.

Our Credentials Speak First

ISO Standards

ISO 9001
ISO 14001
ISO 45001

India National

BIS
Indian Register of Shipping

International

PED 2014/68/EU
AD 2000-Merkblatt W 0
NORSOK M650



Tested to Global Standards

Chemical & Elemental Analysis

- Optical emission spectrometry for precise elemental mapping and alloy verification
- Intergranular corrosion testing and pitting resistance evaluation

Mechanical Integrity Testing

- Tensile strength, elongation, Charpy impact, bend, flaring, and flattening tests - full spectrum

Non-Destructive Evaluation (NDE)

- Ultrasonic Testing (UT) · Eddy Current Testing · Hydrostatic Pressure Testing · Radiography · Air-Under-Water Leak Detection

Who Trusts Us

EPC & Engineering



Defence & Aerospace



Global Refineries



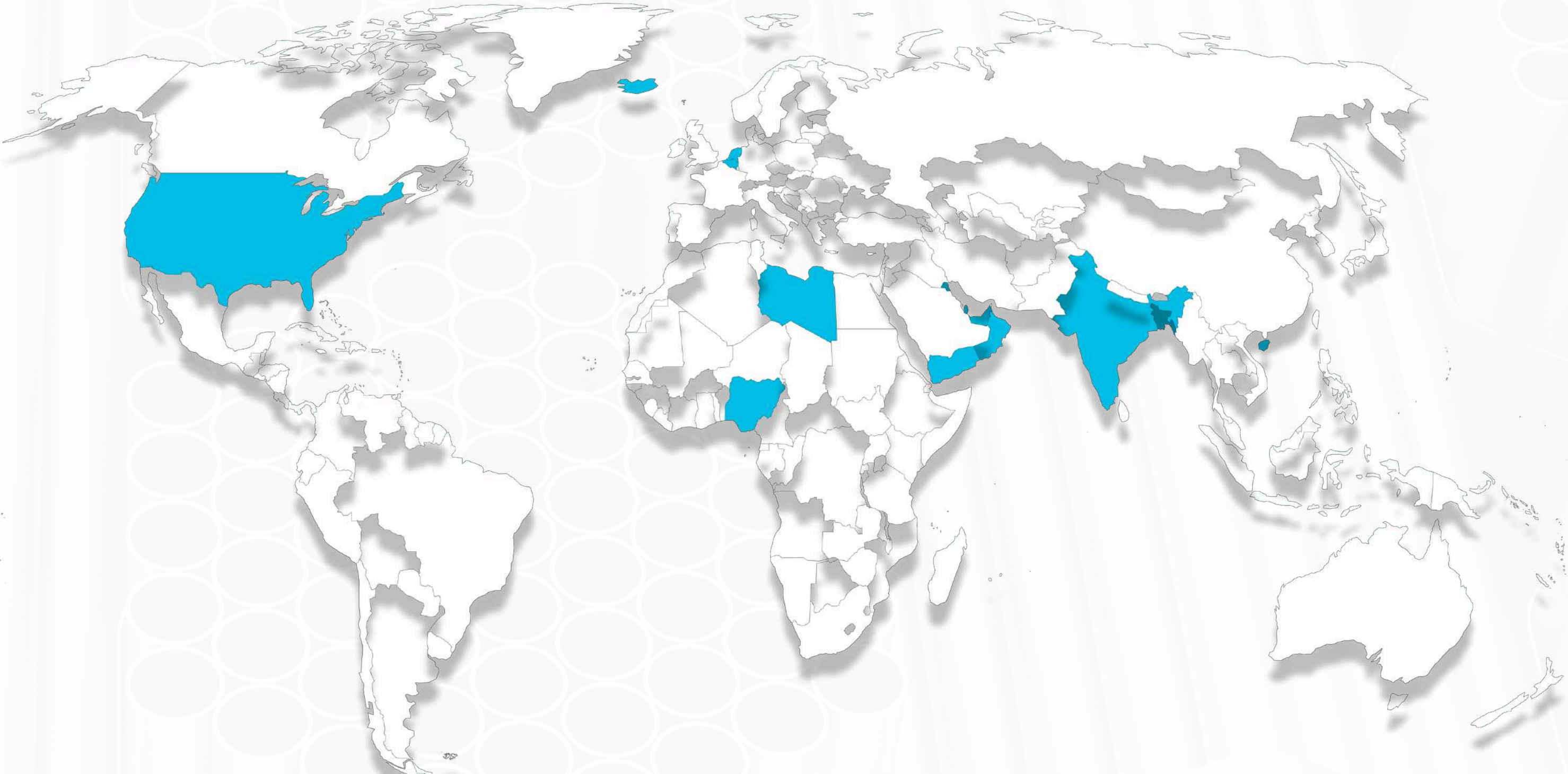
Trusted by the Best, Worldwide



Over 100 active relationships spanning PSUs, private conglomerates, global EPC majors, and sovereign energy companies — REMI is the supplier of choice where performance cannot be compromised.



Global Reach. Local Strength.



Europe & Americas
USA · Spain · Netherlands

Middle East & Africa
UAE · Qatar · Oman · Kuwait ·
Algeria · Nigeria

Asia Pacific
India · Bangladesh · Vietnam

The Sectors Fuelling Our Growth



From nuclear reactors to food processing lines, REMI's product range is embedded in India's highest growth infrastructure verticals – each sector representing a significant and expanding demand pool.



Thermal Power

Core to energy expansion
India's growing power capacity continues to drive demand for high-performance SS tubes designed to endure extreme steam and pressure conditions.



Nuclear Power

High-value, long-cycle segment
Precision SS tubing is critical for nuclear applications, positioning approved players for stable, long-term opportunities.



Oil & Gas

Infrastructure at scale
Expanding pipeline networks and energy infrastructure require corrosion resistant SS solutions built for harsh environments.



Water Treatment & EPC

Essential infrastructure demand
Government initiatives and rising water management needs are accelerating demand for durable and reliable SS piping systems.



Aerospace & Defence

Precision driven applications
High strength, lightweight SS materials are vital for mission critical defence and aerospace systems.



Petrochemicals

Reliability under extremes
Aggressive chemical environments demand robust SS solutions that ensure structural integrity and long-term performance.



Food & Beverages

Fast growing hygienic segment
Increasing focus on hygiene and processing efficiency is driving demand for high grade SS tubing in food and pharma industries.

The Partnership That Changes Everything



REMI's collaboration with WSG Co. Ltd. of South Korea is more than a technology transfer – it is a deliberate pivot into the next generation of high-margin specialty tube markets, including semiconductors, biotechnology and life sciences.

New Tech. New Markets. New Era.

01.

Ultra-High Purity (UHP) Tubes

For tomorrow's tech industries
Targeting semiconductor fabrication, OLED manufacturing, microelectronics, EV slurry transfer systems and biotechnology applications

02.

Titanium Welded Tubes

Powering the infrastructure of tomorrow
Titanium welded tubes designed for rising demand across nuclear energy and data center power systems

03.

High-Purity MP Tubes

Built for next-generation precision industries
Advanced mechanical polished tubes engineered for semiconductors, biotech, food processing, and EV applications

04.

High-Purity Bright Annealed (BA) Tubes

Clean rooms demand clean pipes
Engineered for semiconductor, biotech research facilities and life sciences manufacturing environments

05.

Coil Drawn High Precision Tubes

Where tolerance is everything
Applications spanning semiconductor equipment, life sciences, oil & gas instrumentation, and linear motion control systems

Why This Partnership Works



Make in India

REMI products reach international markets through WSG's established global sales and distribution channels – without building a new network from scratch

Capital Efficient

Existing Tarapur infrastructure is being leveraged and upgraded – no greenfield investment, significantly de-risking the project

Fast to Market

From agreement signing to machinery installation under 6 months. Speed to commercial production is a structural advantage

Portfolio Shift



This isn't incremental growth, it's a deliberate move into high-margin consumer-tech segments: semiconductor, food, pharma

Where Things Stand Today

Product trials with WSG's technology are currently in progress, with the team actively fine tuning processes to meet the exacting standards required for high-purity applications. Commercial production is on the horizon – expected to commence shortly once trials are successfully concluded. The groundwork is firmly in place – machinery is installed, the technical collaboration with WSG is live and REMI stands on the cusp of entering a whole new high-margin product category. First customer dispatches are anticipated in the near term.

Performance Benchmark Across EP Grades



| | | BA | SF1 | SF4 | UHP | Coiled tubing | |
|---------------------------------------|--------------------|--|---|---|--|---|-------------------------|
| Product specifications & requirements | Ra value (maximum) | 0.8µm | 0.51µm | 0.38µm | 0.25µm | | |
| | Applications | • Sanitary | • Pharmaceuticals • Dairy | • Food & beverage • Pharmaceuticals • Lifesciences • High-purity water treatment | • Semiconductor • EV battery • Electronics | • Oil & gas | |
| | Cleanroom facility | Not Required | ✓ | ✓ | ✓ | ✓ | |
| | ASME BPE | Not Required |  |  | Not Required | Not Required | |
| Size range | 1/4" | Partial capacity installed to produce trial lots, mass production facility upgradation in progress | | | | | Upgradation in-progress |
| | 3/8" | ✓ | ✓ | ✓ | ✓ | | |
| | 1/2" | ✓ | ✓ | ✓ | ✓ | | |
| | 3/4" | ✓ | ✓ | ✓ | ✓ | | |
| | 1" | ✓ | ✓ | ✓ | ✓ | | |
| | 1½" | ✓ | ✓ | ✓ | | | |
| | 2" | ✓ | ✓ | ✓ | | | |
| | 2½" | Upgradation in-progress | | | | Sizes not required for this application | |
| | 3" | | | | | | |
| | 4" | | | | | | |
| 6" | | | | | | | |

Note - • Above given competitors have facility to manufacture welded tubes only. REMI has seamless and welded both. • None of the competitors have a cleanroom facility

A Year Worth Talking About



All figures are actuals as of 31st March 2026 — inclusive of Q4 FY26 results

Record-Breaking. All Year Long.



₹108 Cr

Order Book at Close
March 2026



580 MT

Peak Monthly Dispatch
Record — March 2026



₹62.2 Cr

Single Largest Order
Thermal power tubes

FY26: Milestones Delivered



Defence — A Proud First

REMI delivered a specialised consignment of seamless pipes to the Indian Navy for submarine applications — a validation of our precision manufacturing capabilities and security grade supply chain credentials.



Global Market Approvals

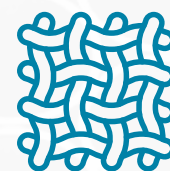
- ADNOC (Abu Dhabi National Oil Company) — quality and product approval formally received; commercial supplies commenced
- NORSOK M650 certification secured — opening doors to technically demanding international projects
- First dispatch executed against landmark seamless tubes order on time, in full

Significant Order Wins — FY26 at a Glance



EPC Sector Win

₹25.4 Cr order from a leading EPC contractor - welded pipes for advanced water treatment infrastructure



Equipment Fabrication

₹62.6 Cr order from a reputed fabricator - high-precision seamless tubes for thermal power plant use



All-Time Record (Q3 FY26)

₹57.8 Cr single order — the largest in REMI's history at the time of award

Supply Milestones That Mattered

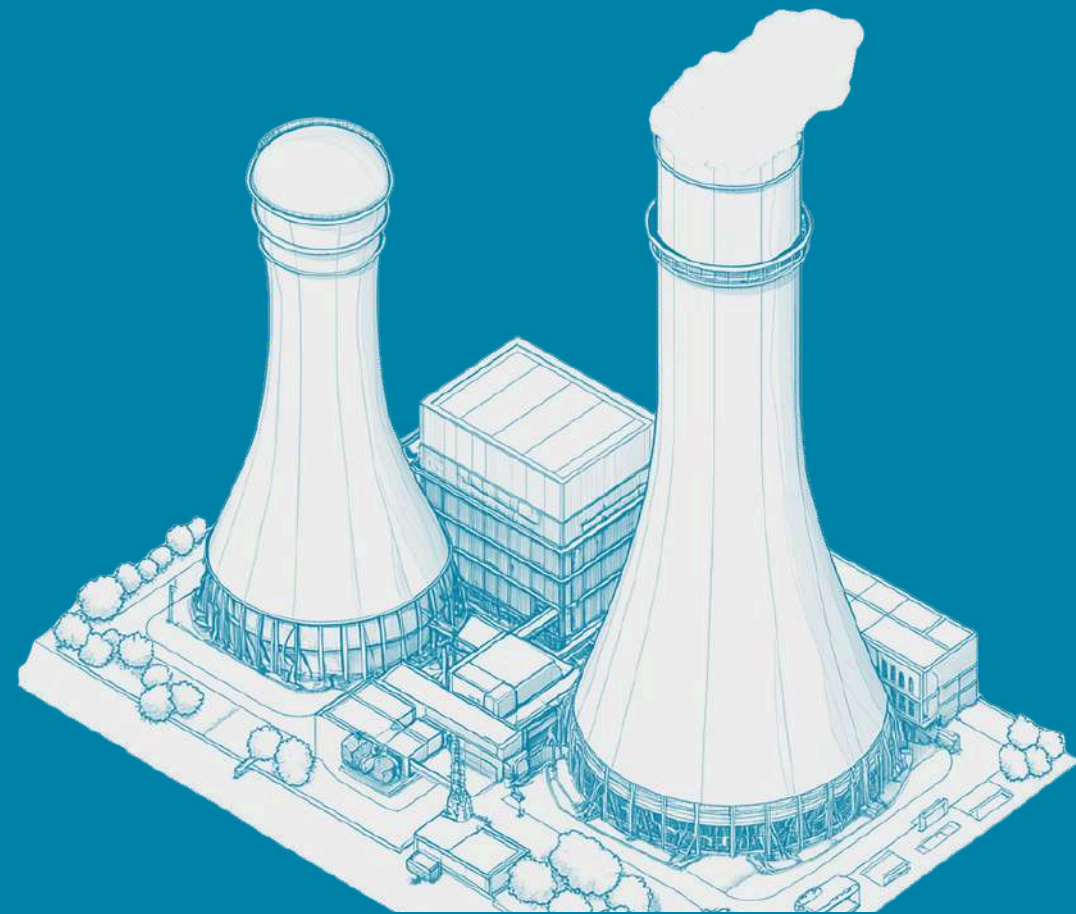
- Executed REMI's first-ever large-diameter welded pipe export to the ADNOC refinery in Abu Dhabi
- Supplied specialty seamless pipes to the Indian Navy - submarine grade precision
- Delivered super duplex welded pipes to a prestigious international refinery

India's Nuclear Breakthrough & REMI's Growth Opportunity



A Defining Milestone

India's 500 MWe PFBR achieved first criticality (April 2026) – marking entry into advanced nuclear capability
Signals the beginning of large scale nuclear expansion & fuel cycle ecosystem buildout



REMI:

Already Inside the Ecosystem

- Supplied critical piping solutions for:
 - PFBR reactor
 - Fuel recycling facility
- Products operate in highly specialized, extreme nuclear environments

Positioning: Embedded in both reactor + downstream fuel cycle

Strategic Advantage: Approved Nuclear Vendor

- Qualified by **IGCAR, BHAVINI & NPCIL** after rigorous multi-year validation
- Nuclear approvals are:
 - Hard to obtain
 - Limited supplier base

Creates a strong entry barrier & preferred supplier status

Unlocking Long-Term Growth Opportunities

- India targeting **~100 GW nuclear capacity by 2047**
- Pipeline includes:
 - New reactors
 - Fuel recycling & processing facilities
- Each project requires **high spec, qualified piping suppliers**

REMI is well-positioned to:

- Participate in **future reactor builds**
- Capture **repeat orders across lifecycle**
- Expand into **broader nuclear & high-spec global markets**

Manufacturing Excellence at Scale



51,000 square meters. 12,000 metric tons of annual capacity. One uncompromising commitment to precision. Welcome to REMI's Tarapur manufacturing campus — where every pipe and tube that leaves is built to last.

| Particulars | Details |
|------------------------|---|
| Location | Plot No. N-211/1, M.I.D.C. Tarapur, Boisar, Dist. Palghar, Maharashtra — 401506 |
| Campus Footprint | 51,000 sq. meters — fully integrated production and support infrastructure |
| Production Capacity | 12,000 MT per annum (installed) |
| Quality Certifications | ISO 9001 · ISO 14001 · ISO 45001 — quality, environment & occupational safety |
| Technology Platform | Advanced CNC machinery with integrated process automation for consistent, high-precision output |
| Product Range | Complete range of stainless steel pipes & tubes — seamless and welded, covering all major industrial specifications |

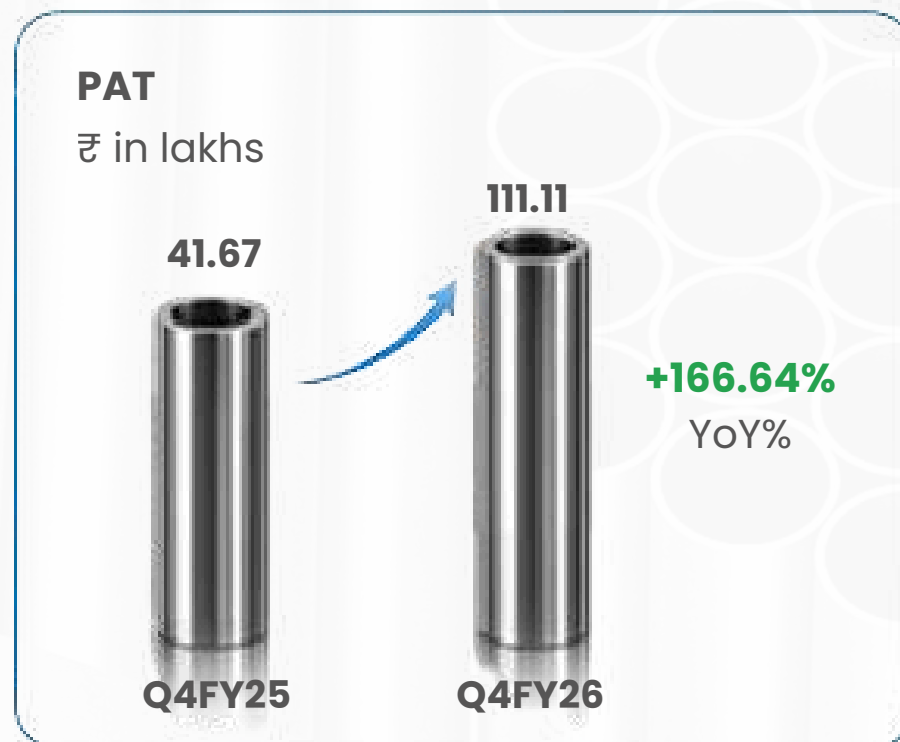
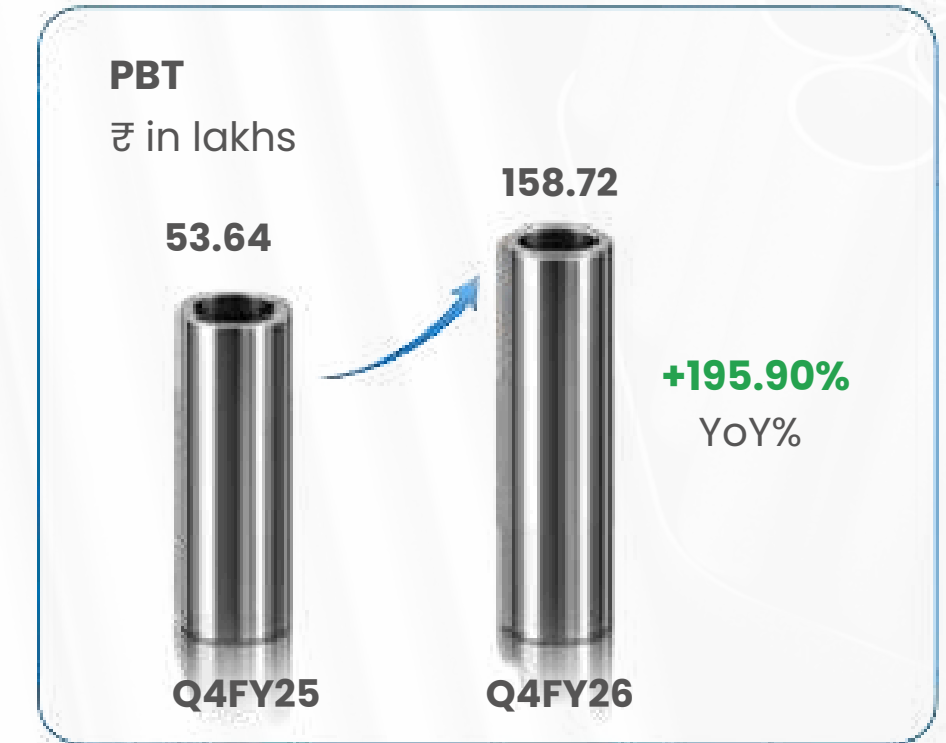
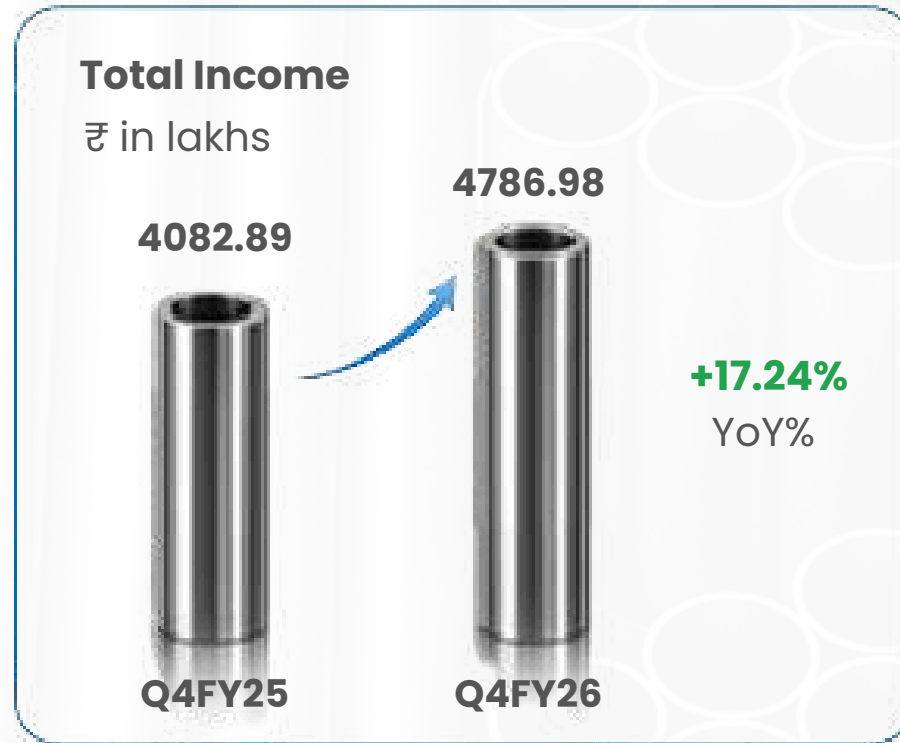
The Numbers Behind the Story



All figures in Indian Rupees (Lakhs).

| Particulars | Q4 FY26 | Q4 FY25 | YoY% | FY26 | FY25 | YoY% |
|-------------------|----------|----------|-----------|-----------|-----------|---------|
| Total Income | 4,786.98 | 4,082.89 | ▲ 17.24% | 14,291.88 | 13,907.50 | ▲ 2.76% |
| EBITDA | 341.92 | 185.83 | ▲ 84.00% | 911.22 | 839.93 | ▲ 8.49% |
| Profit Before Tax | 158.72 | 53.64 | ▲ 195.90% | 372.94 | 352.96 | ▲ 5.66% |
| Profit After Tax | 111.11 | 41.67 | ▲ 166.64% | 274.25 | 267.19 | ▲ 2.64% |
| Cash PAT | 172.70 | 150.04 | ▲ 15.10% | 631.51 | 621.03 | ▲ 1.69% |

Key Ratios



DISCLAIMER



This presentation and the accompanying slides (the "Presentation"), which have been prepared by Remi Edelstahl Tubulars Ltd (the "Company"), have been prepared solely for information purposes and do not constitute any offer, recommendation or invitation to purchase or subscribe for any securities, and shall not form the basis or be relied on in connection with any contract or binding commitment whatsoever. No offering of securities of the Company will be made except by means of a statutory offering document containing detailed information about the Company.

This Presentation has been prepared by the Company based on information and data which the Company considers reliable, but the Company makes no representation or warranty, express or implied, whatsoever, and no reliance shall be placed on the truth, accuracy, completeness, fairness and reasonableness of the contents of this Presentation. This Presentation may not be all inclusive and may not contain all of the information that you may consider material. Any liability in respect of the contents of, or any omission from, this Presentation is expressly excluded. Certain matters discussed in this Presentation may contain statements regarding the Company's market opportunity and business prospects that are individually and collectively forward-looking statements. Such forward-looking statements are not guarantees of future performance and are subject to known and unknown risks, uncertainties and assumptions that are difficult to predict.

These risks and uncertainties include, but are not limited to, the performance of the Indian economy and of the economies of various international markets, the performance of the industry in India and world-wide, competition, the Company's ability to successfully implement its strategy, the Company's future levels of growth and expansion, technological implementation, changes and advancements, changes in revenue, income or cashflows, the Company's market preferences and its exposure to market risks, as well as other risks.

The Company's actual results, levels of activity, performance or achievements could differ materially and adversely from results expressed in or implied by this Presentation. The Company assumes no obligation to update any forward-looking information contained in this Presentation. Any forward-looking statements and projections made by third parties included in this Presentation are not adopted by the Company and the Company is not responsible for such third-party statements and projections. All Maps used in the Presentation are not to scale.

All data, information and maps are provided "as is" without warranty or any representation of accuracy, timeliness or completeness.

THANK YOU

REMI

